



TOSV - GEE VALVE SEALS DIVISION

Manufacture and supply of double and triple offset butterfly valve seals



GEE GRAPHITE LTD

TOSV – GEE VALVE SEAL DIVISION

Gee Graphite's TOSV product range includes double/triple offset valve seals, solid metal seat, secondary metal seats and the AOC seal. Also offering a wide range of flexible graphite based products and services used particularly in gaskets, valves, process equipment and flanges.

Double/Triple Offset Butterfly Valve Seals & Solid Metal Seats

Gee Graphite have unrivalled experience in the manufacture and supply of double and triple offset butterfly valve seals. With our expertise in flexible graphite and precision waterjet cutting, we can assist valve designers in producing laminated valve seals to suit specific applications.

Materials include:

Flexible graphite, PTFE RPTFE, mica type and traditional gasket materials are all supplied as interlayer materials.

Both disc mounted or body mounted styles are supplied in sizes from 2" (50mm) to 60" (1500mm) with specials available up to sizes 118" (2950mm).

The critical technical requirements of the sealing face are fully understood and achieved through precision clamping and machining of the laminate.



Solid seals, disc/body seats and clamp rings are supplied fully machined to customer drawings.

Capability to machine both inner and outer sealing surfaces.

Secondary Metal Seats

The manufacturing process of the secondary metal seat is produced from "spun" metal giving a perfectly flat and scratch free surface regardless of diameter, and allows us to achieve a 0.15mm tolerance between the critical radii on the valve disc seats.

Precision waterjet cut and spun metal valve seats are supplied in various metals as shown in the material chart. These products are available in a full range of diameters from 2" (50mm) – 60" (1500mm).

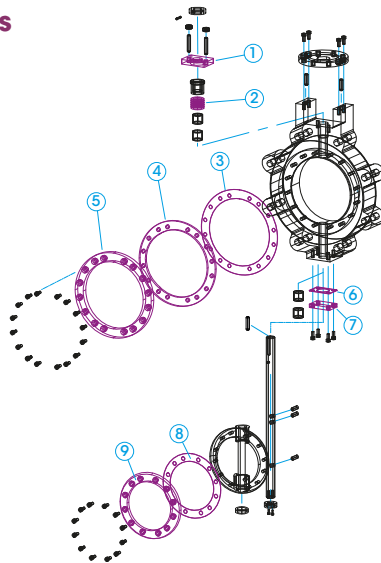
Material

304 Stainless Steel	Alloy 718
316 Stainless Steel	Alloy X750
347 Stainless Steel	Alloy 800
410 Stainless Steel	Hastelloy C276
630 Stainless Steel	Titanium Grade 2
Duplex 31803	Titanium Grade 5
Super Duplex 32750	Nitronic 50
Super Duplex 32760	Nitronic 60
Alloy 400	Zirconium
Alloy 625	

- Laminated or Solid
- Body or Disc Mounted
- Graphite Layer
- Soft Cut Layer
- PTFE Layer
- Mica Layer
- Combination Graphite & PTFE



Butterfly Value Seals



Key

1. Gland Plate
2. Gland Packing
3. Body Seat Gasket
4. Body Seat
5. Body Seat Retaining Ring
6. End Cover Gasket
7. End Cover
8. Disc Seal Gasket
9. Disc Seal

All items listed are supplied by Gee Graphite Ltd

Gee Graphite Ltd, Havelock Street, Ravensthorpe Industrial Estate,
Dewsbury, West Yorkshire, WF13 3LU, ENGLAND

Tel: +44 (0) 01924 480011 Email: sales@geegraphite.com www.geegraphite.com

